
Lighting Proposal Memo

Technical Report 1
Part 1

Xiaoyin Wu
Penn State University
Architectural Engineering
Lighting/Electrical
Adviser: Shawn Good

Technical Report 1—Part1 | Lighting Proposal Memo

Xiaoyin Wu

xqw5042@psu.edu

Sep 10th, 2013

Four proposed spaces chosen for the study of lighting design of this thesis project are

- Lobby—Transition Space
- Conference Room—Specialty Space
- Photovoltaic Lab—Specialty Space
- 3rd floor Open Office—Large Working Space

Analysis By Space

LOBBY/RECEPTION | 609.5SF + 425.6SF

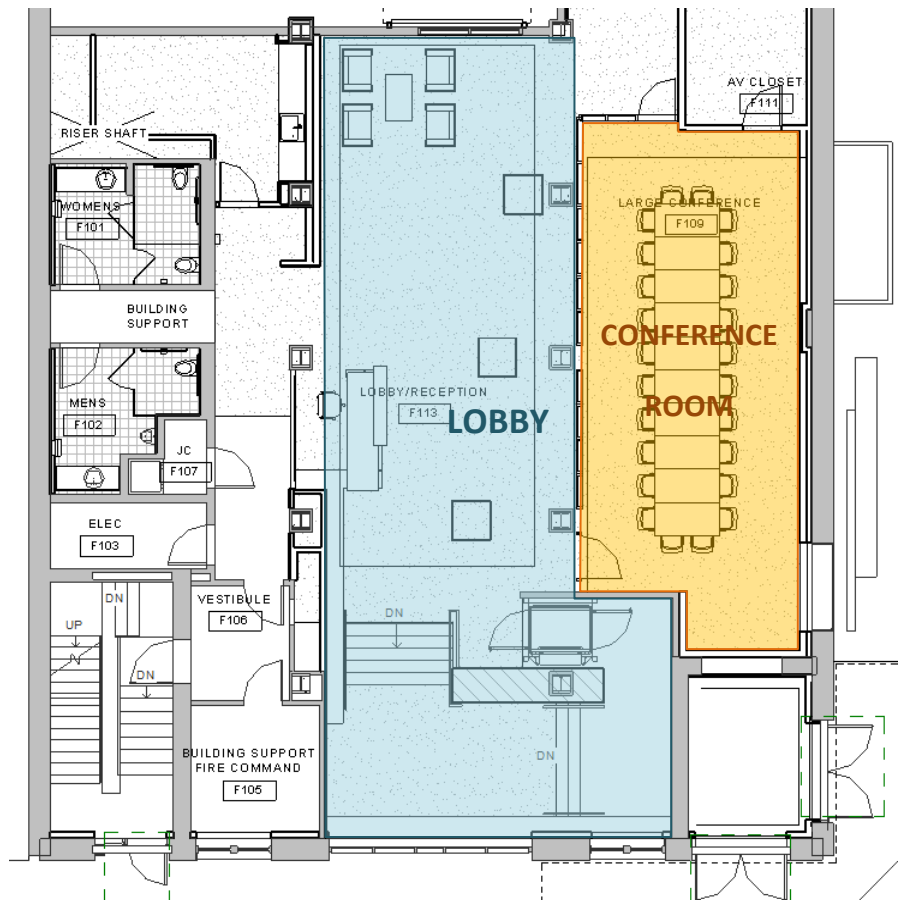
Lobby is located on the first floor right by the entrance and vestibule. It has two levels of floor height, connected by a short length of stairs. The lower level of the lobby is functioned as a transition area which connects vestibule and the main area of the lobby. The upper level of the lobby also serves as the reception area. The main/upper lobby is separated by a convertible wall with the large conference room.

Floor Material: Rubber finish

Base Material: Rubber/WD

Wall Material: GWB/Glass/Brick

Ceiling Material: Exposed ceiling
(existing timber beams)



CONFERENCE ROOM | 639.1SF

The large conference room is a rectangular shaped room on the first floor locates right next to the lobby. The conference room is separated from the reception area by a convertible petition wall which can be removed and converts the first floor into a large open space. The conference room is also served as a multi-function work space if needed.

Floor Material: Carpet and Rubber finish

Base Material: WD

Wall Material: GWB/Glass/Brick

Ceiling Material: Exposed ceiling (existing timber beams)

PHOTOVOLTAIC LAB | 2470.5SF

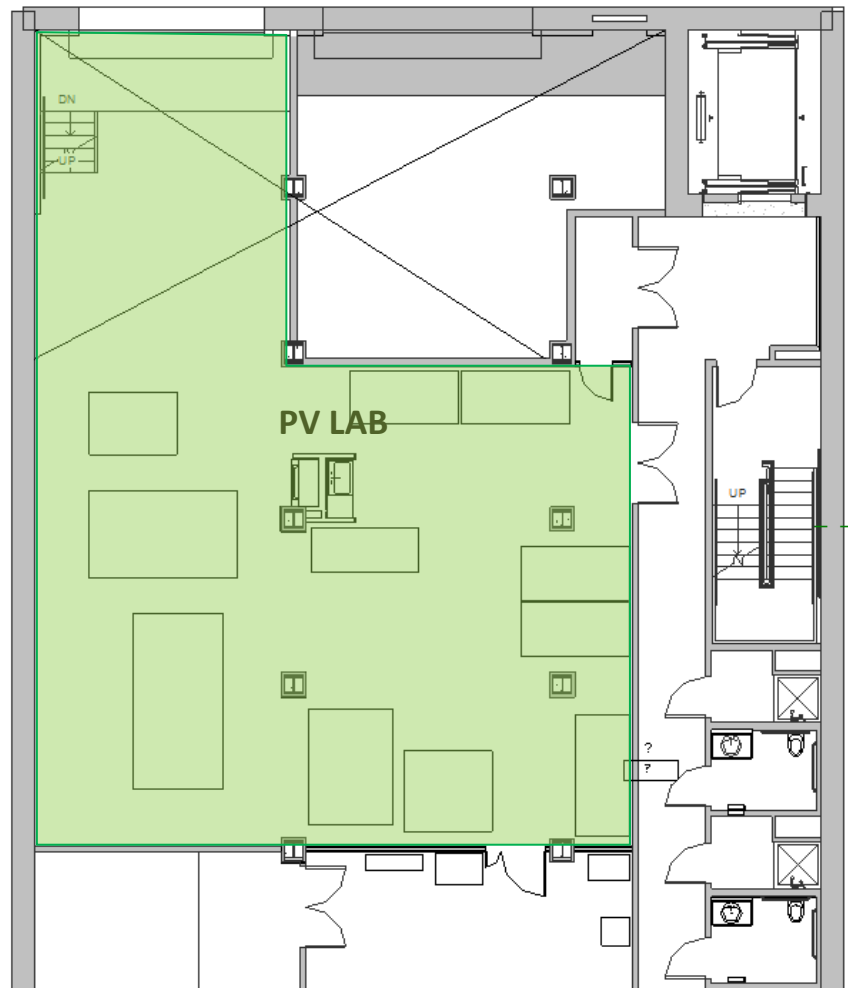
The photo voltaic lab is located in the basement with a two-story ceiling height. The lab space is for research use. The lab shares the same ceiling with the lobby on the first floor. And as for showcase purpose, there is an overlook window on the lobby level that people can overlook from the lobby into the lab.

Floor Material: Concrete

Base Material Rubber

Wall Material: GWB

Ceiling Material: Exposed Timber Beam



3RD FLOOR OPEN OFFICE | 2652SF

The third floor is mostly occupied by a large open office space with closed offices and labs along the side. One end of the office space is windows and a complete clear meeting room is located towards the other end of the floor space.

Floor material: Rubber/Carpet

Base material: Rubber

Wall Material: GWB

Ceiling Material: Exposed Timber Beams

